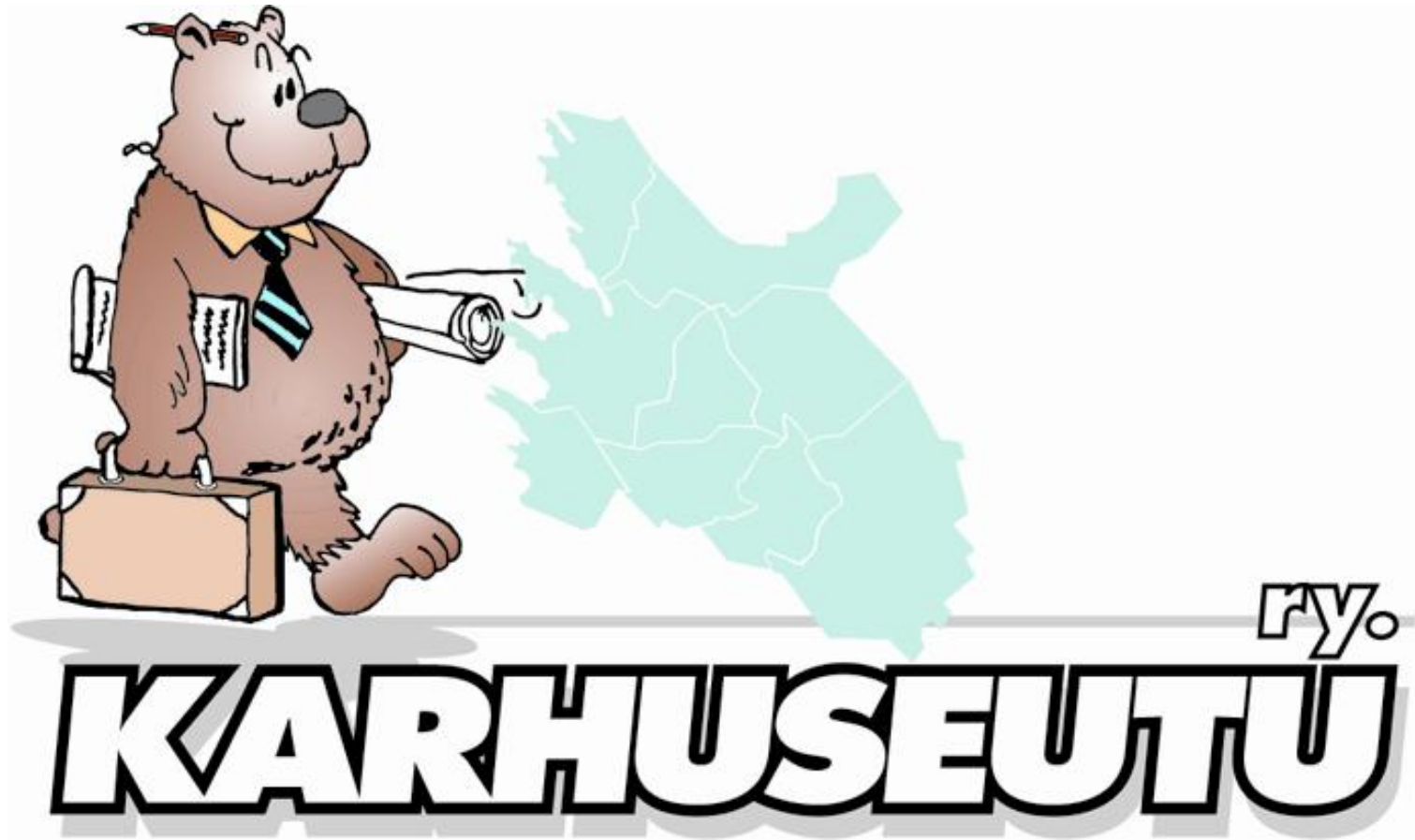


LAG Karhuseutu

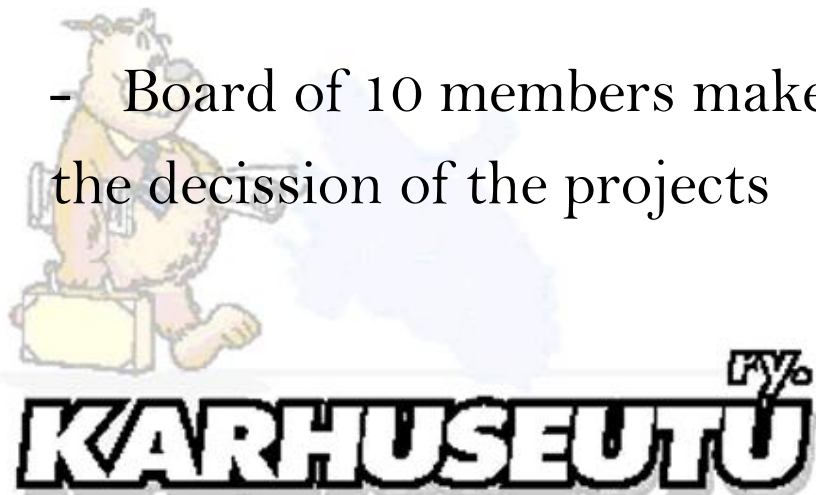
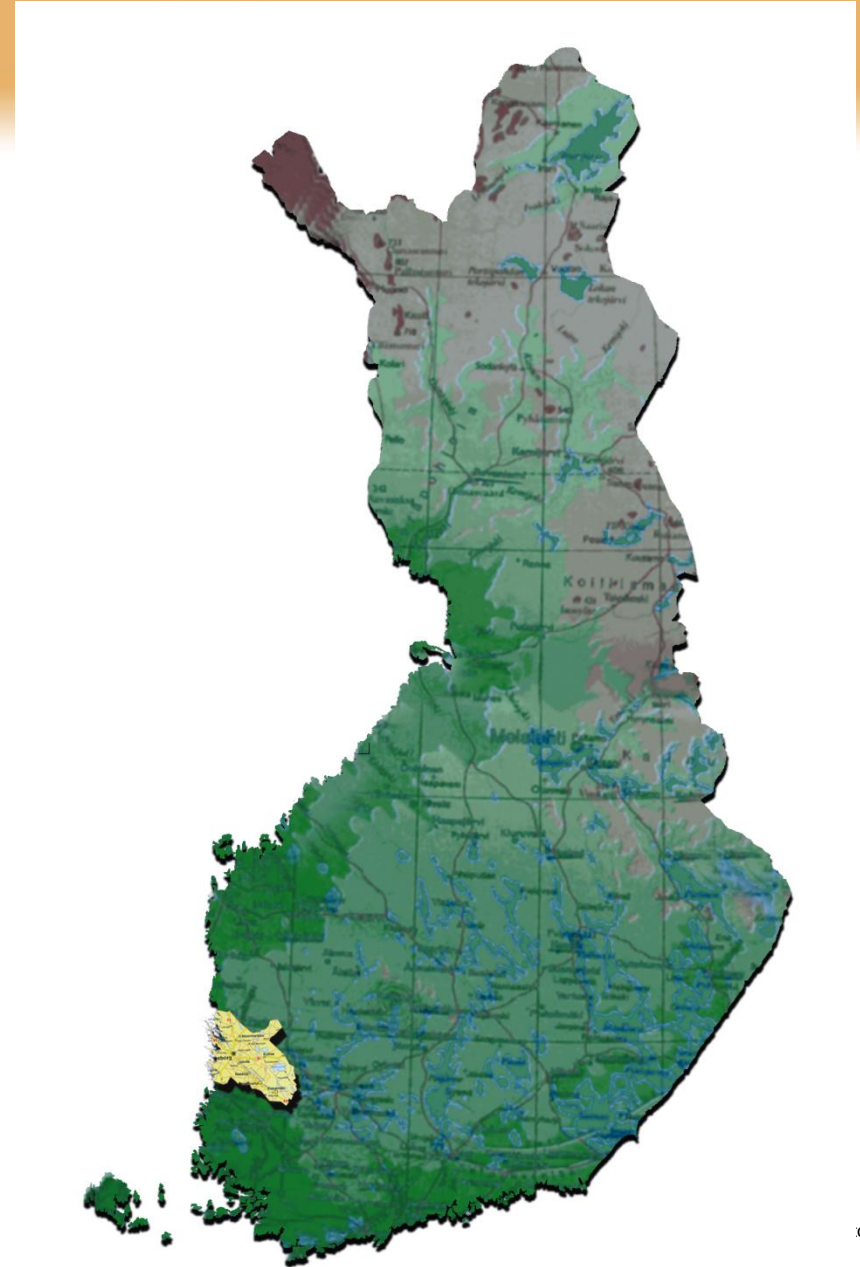


Euroopan maaseudun kehittämisen
maatalousrahasto: Eurooppa investoi
maaseutualueisiin.

- Karhuseutu is one of the Finland's 55 LAGs

- Main task is to admit Leader support to local actors in rural areas

- Board of 10 members makes the decision of the projects



Municipalities in LAG Karhuseutu

Harjavalta
Kokemäki
Luvia
Nakkila
Noormarkku
Pori
Ulvila



Facts of Lag Karhuseutu

- association established y 1997
- members about 200 (associations, private, municipalities)
- Pomo 1997-2000
- Leader+ 2001>2006
 - _ total budget 6,7 M e,(EU 2,2 M, privat 2,3M rest state and municipalities)
 - Financed 173 projects, Average 60000 Euros
- Leader 2007>2011
 - Budget is the same, but EU is less. It was 50% ,now its 45%
 - Financed 35 projects until 1.5.



Transnational co-operation

- transnational co-operation with many LAGs
- co-operation projects with:
 - * Sweden * England
 - * Estonia * Ireland
 - * France * Italy
- themes in fields of:
 - * Music * Villages
 - * Handicrafts
 - * Street theatre
 - * Entrepreneurs



Looking for Partners

- Pop music for young accordionists
- Outdoor Activities/ ecotourism
- Iron works
- Making Movies with youngsters
- Dance
- Maritim Heritage

>>> For more information from Lag Karhuseutu :

Jaana Mälkki, coordinator of international affairs

jaana.malkki@karhuseutu.fi , tel +358 440 926 926

www.karhuseutu.fi



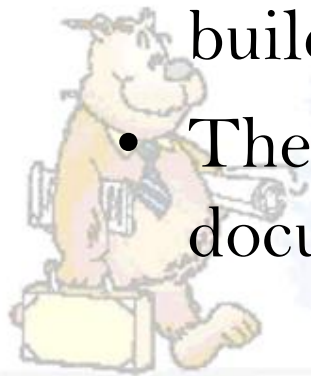
KARHUSEUTU^{ry}



Euroopan maaseudun kehittämisen
maatalousrahasto: Eurooppa investoi
maaseutualueisiin.

Maritime heritage

- Traditional Sailing Ship Association Ihana
- The goal of the association is to build the galleass *Ihana*
- Luvia has a history of shipbuilding that spans hundreds of years
- Today, Luvia is still home to a number of master builders of wooden boats and boatbuilders
- The different work phases are also being documented for the sake of future generations



Maiden voyage in 2011



- The Ihana will be built in the traditional shipyard in Luvia
- It's possible to follow the building work step by step
- We firmly believe she will be seaworthy by 2011!



Looking for partners

”Traditional wooden boat yard as a travel destination”

- Traditional wooden boat yard
- Strengthening of Young peoples' togetherness in the Baltic area
- Environment education
- Youth sail training
- a webcam system



KARHUSEUTU ry



Euroopan maaseudun kehittämisen
maatalousrahaisto: Eurooppa investoi
maaseutualueisiin.

Traditional Sailing Ship Association Ihana

Heidi Helkiö-Mäkelä

Project assistant

e-mail: heidi@kaljaasi.fi

tel +358440580600



KARHUSEUTU ry



Euroopan maaseudun kehittämisen
maalousrahasto: Eurooppa investoi
maaseutualueisiin.