

# Implementation of the Lithuanian Rural Development Programme for 2007 - 2013



EUROPOS ŽEMĖS ŪKIO FONDAS KAIMO PLĖTRAI:  
EUROPA INVESTUOJA Į KAIMO VIETOVES



LIETUVOS RESPUBLIKOS  
ŽEMĖS ŪKIO MINISTERIJA

UDK 338.43(474.5)

Li239



The publication presents statistics on the implementation of the Lithuanian Rural Development Programme for 2007 – 2013 (the Programme) up to 1 December 2011. It also outlines the Programme priorities and supported actions.



## Implementation of the Lithuanian Rural Development Programme for 2007 - 2013

The provision of the European Union (EU) support for agriculture and rural development under the Lithuanian Rural Development Programme for 2007 – 2013 (the Programme) has been started from 2007.

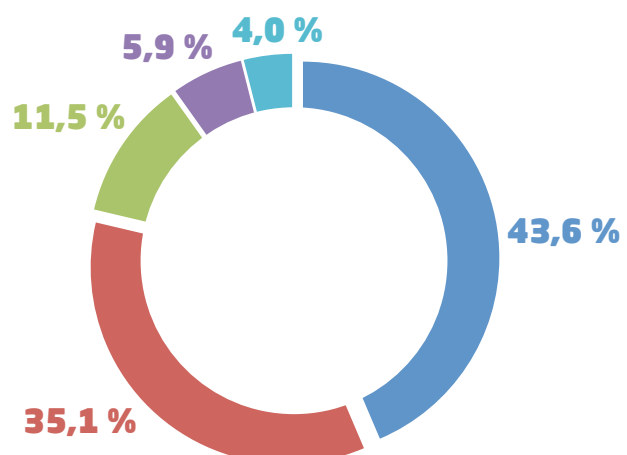
In 2007 – 2013, EUR 2.287 billion has been allocated for the implementation of the Lithuanian Rural Development Programme for 2007 – 2013, including EUR 1.766 billion of the EU funds. From launching the Programme and until December 1, 2011, the approved support sum amounted to EUR 1.570 billion, the paid out amount totaled EUR 1.092 billion.

### **The general objective for Lithuanian rural development:**

To ensure economic growth: to improve the competitiveness of agricultural, food and forestry sectors, to create opportunities for diversification of rural economic activities and improvement of the quality of life in rural areas, to simultaneously foster human values, and to mitigate differences between urban and rural areas and between separate regions.

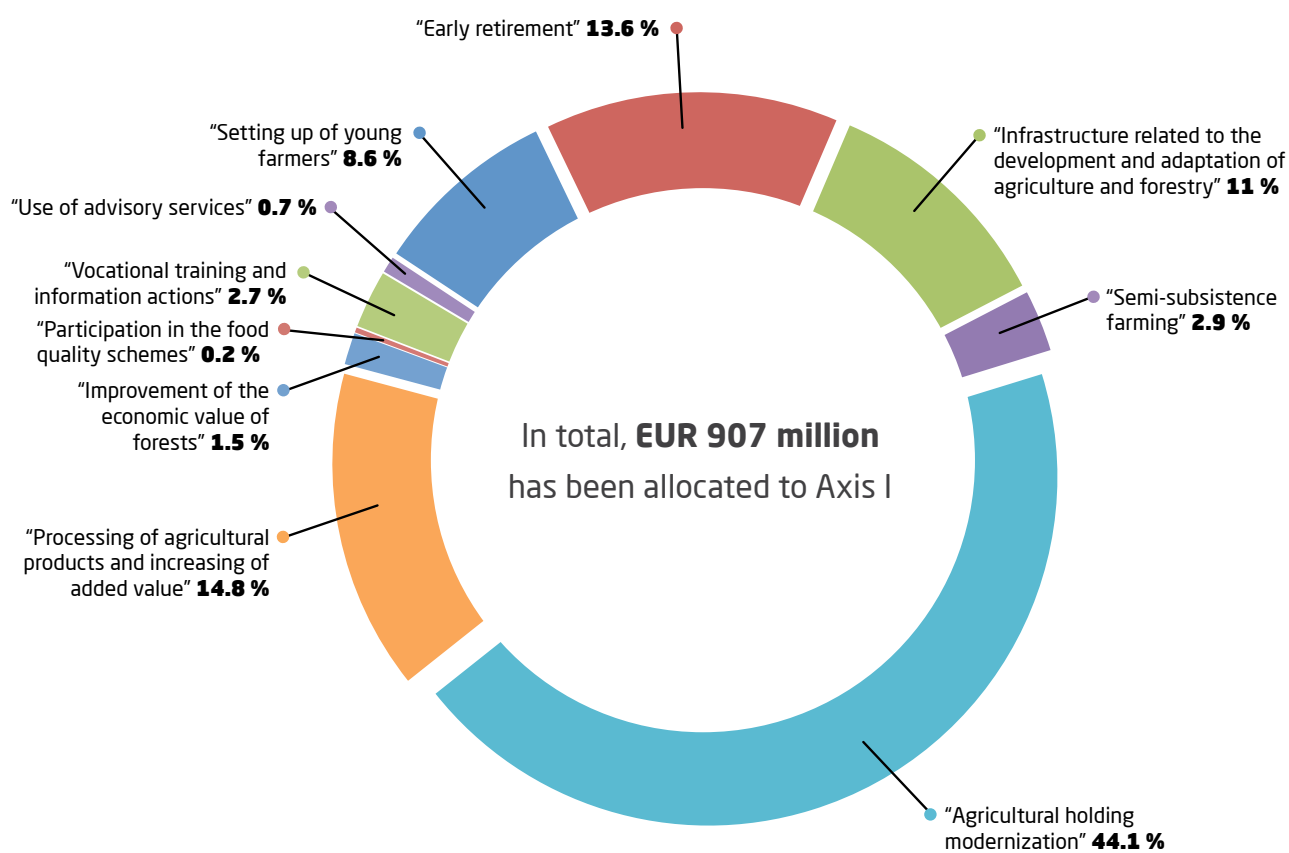
### **Breakdown of the Rural Development Programme 2007 – 2013 funds by axis in percentage**

- Axis I **43.6 %**
- Axis II **35.1 %**
- Axis III **11.5 %**
- Axis IV **5.9 %**
- „Technical support“ **4.0 %**



# Axis I “Improving the competitiveness of the agricultural, food and forestry sector”

**Objective:** to develop competitive agri-food and forestry sectors.



## Priorities

### 1.1. Improving the structure of farms and forest holdings:

"Setting up of young farmers"; "Early retirement"; "Infrastructure related to the development and adaptation of agriculture and forestry"; "Semi-subsistence farming".

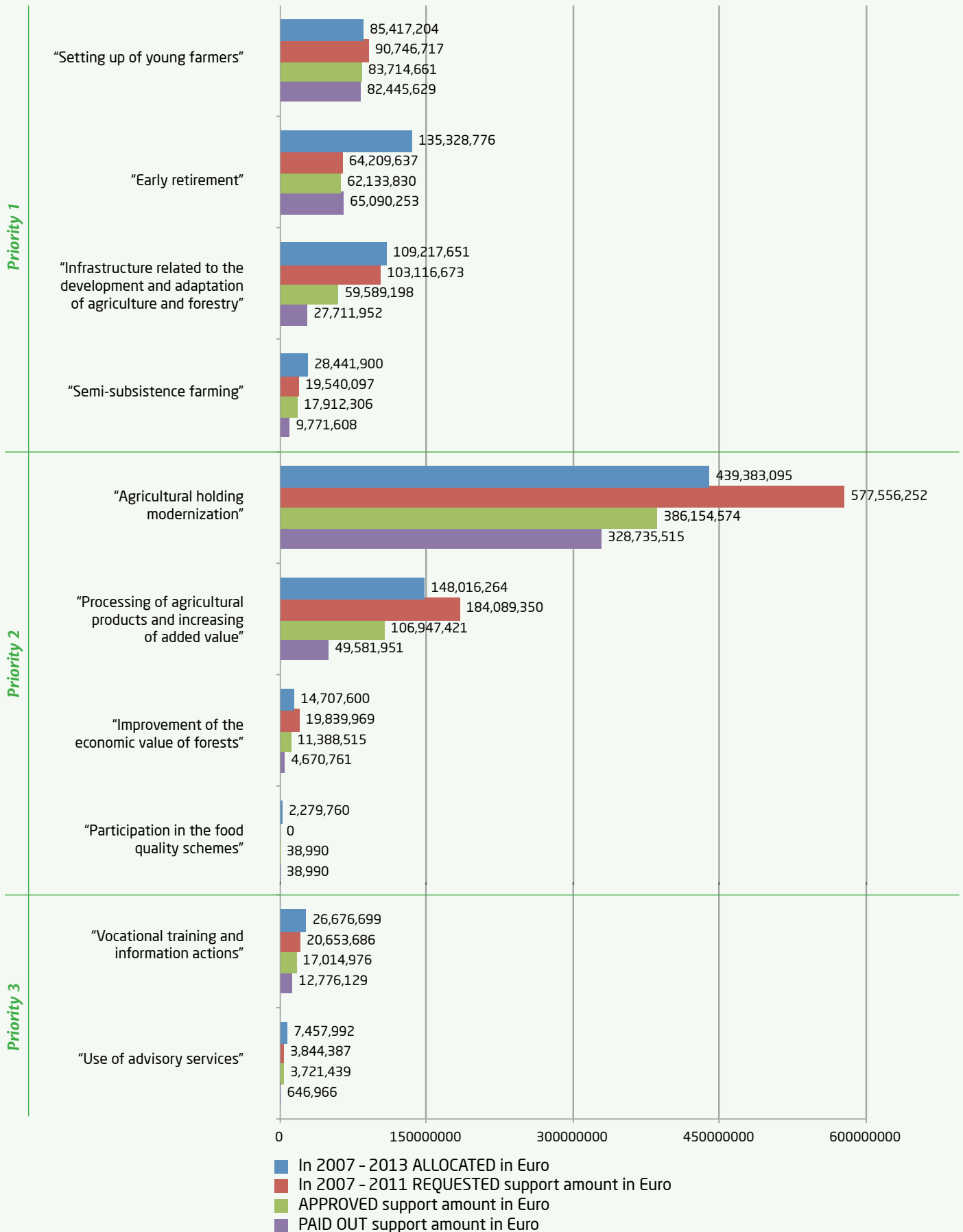
### 1.2. Improving the level of modernization, technology and innovations:

"Agricultural holding modernization"; "Processing of agricultural products and increasing of added value"; "Improvement of the economic value of forests"; "Participation in the food quality schemes".

### 1.3. Strengthening human capital:

"Vocational training and information actions"; "Use of advisory services".

**Implementation of the Programme measures of Axis I until December 1, 2011**





Lithuanian farmers acquired a lot of modern machinery under the Programme support measure Modernization of agricultural holdings

## Implementation of measures

### 1.1. "Vocational training and information actions":

*Supported areas of action:* "Training and information actions for persons related to agriculture"; "Diffusion of scientific knowledge and innovative practices for persons engaged in the agricultural, food processing and forestry sectors".

**1.2. "Use of advisory services":** *Supported areas of action:* "Advisory services on the assessment of a holding"; "Advisory services on the statutory management requirements and the good agrarian and environmental conditions"; "Advisory services on the agrarian environmental issues"; "Advisory services on the bookkeeping of a holding"; "Advisory services on issues related to forestry".

**1.3. "Setting up of young farmers":**

**1.4. "Early retirement":**

**1.5. "Semi-subsistence farming":**

**1.6. "Agricultural holding modernization":** *Supported areas of action:* "Implementation of the nitrate directive"; "Modernization of agricultural holdings":

1) production of agricultural products and provision of services for agriculture;

2) production of biogas from the farm waste;

3) processing of agricultural products (produced and/or grown in a holding) and their placement on the market;

"Planting of short rotation plantations".

**1.7. "Improvement of the economic value of forests":**

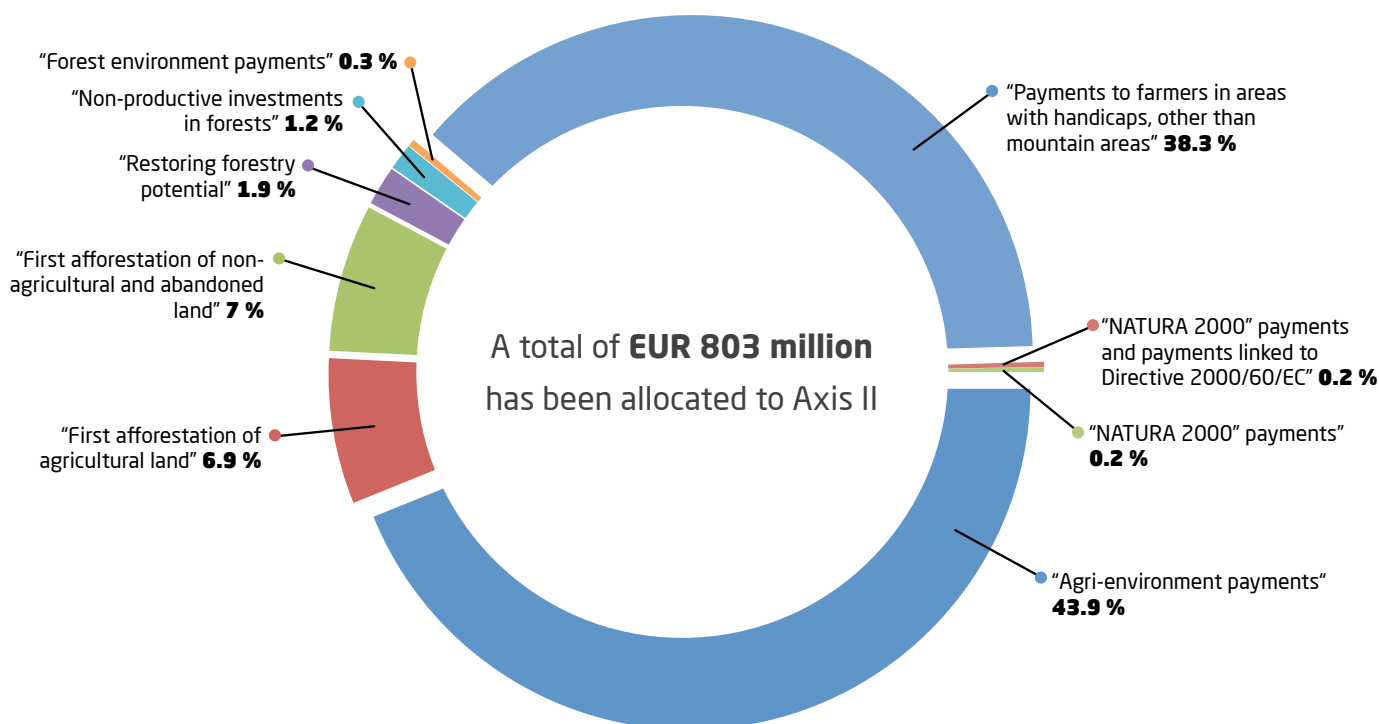
**1.8. "Infrastructure related to the development and adaptation of agriculture and forestry":** *Supported areas of action:* "Agricultural water management"; "Land consolidation"; "Improvement of forest infrastructure"; "Increasing the marketable value of livestock and fowl".

**1.9. "Processing of agricultural products and increasing of added value":** *Supported areas of action:* "Processing of agricultural products and/or marketing"; "Restructuring of the dairy sector by setting up new co-operative milk processing enterprises".

**1.10. "Participation in food quality schemes":**

## Axis II "Improving the Environment and the Countryside"

**Objective:** to improve environment and landscape, to stop decline of biodiversity through rational use of land resources and promotion of sustainable development of agriculture and forestry.



### Priorities

**2.1. Environment-friendly farming practices: "Agri-environment payments (Organic farming programme)":**

**2.2. Mitigation of climate change:**

"First afforestation of agricultural land"; "First afforestation of non-agricultural and abandoned land"; "Restoring forestry potential"; "Non-productive investments in forests"; "Forest environment payments".

**2.3. Preservation of biodiversity and development of high-nature value and traditional agrarian areas:**

"Payments to farmers in areas with handicaps, other than mountain areas"; "NATURA 2000" payments and payments linked to Directive 2000/60/EC"; "NATURA 2000" payments".

"Agri-environment payments (Landscape stewardship scheme); "Preservation of Lithuanian endangered indigenous domestic animal and fowl breeds"; "Programme for improving the status of water bodies at risk".

### Implementation Measures

**2.1. "Agri-environment payments". Supported areas of action:** "Landscape management"; "Organic farming"; "Preservation of Lithuanian indigenous domestic animal breeds"; "Improving the status of water bodies at risk".

**2.2. "First afforestation of agricultural land"**

**2.3. "First afforestation of non-agricultural and abandoned land"**

**2.4. "Restoring forestry potential and introducing prevention actions":** Supported areas of action: "Restoring forestry potential damaged by natural disasters and fires and introducing prevention measures"; "Improving the general state forest fire prevention system".

**2.5. "Non-productive investments in forests":**

**2.6. "Forest environment payments":** Supported areas of action: "Payments for prevention of harvesting in the

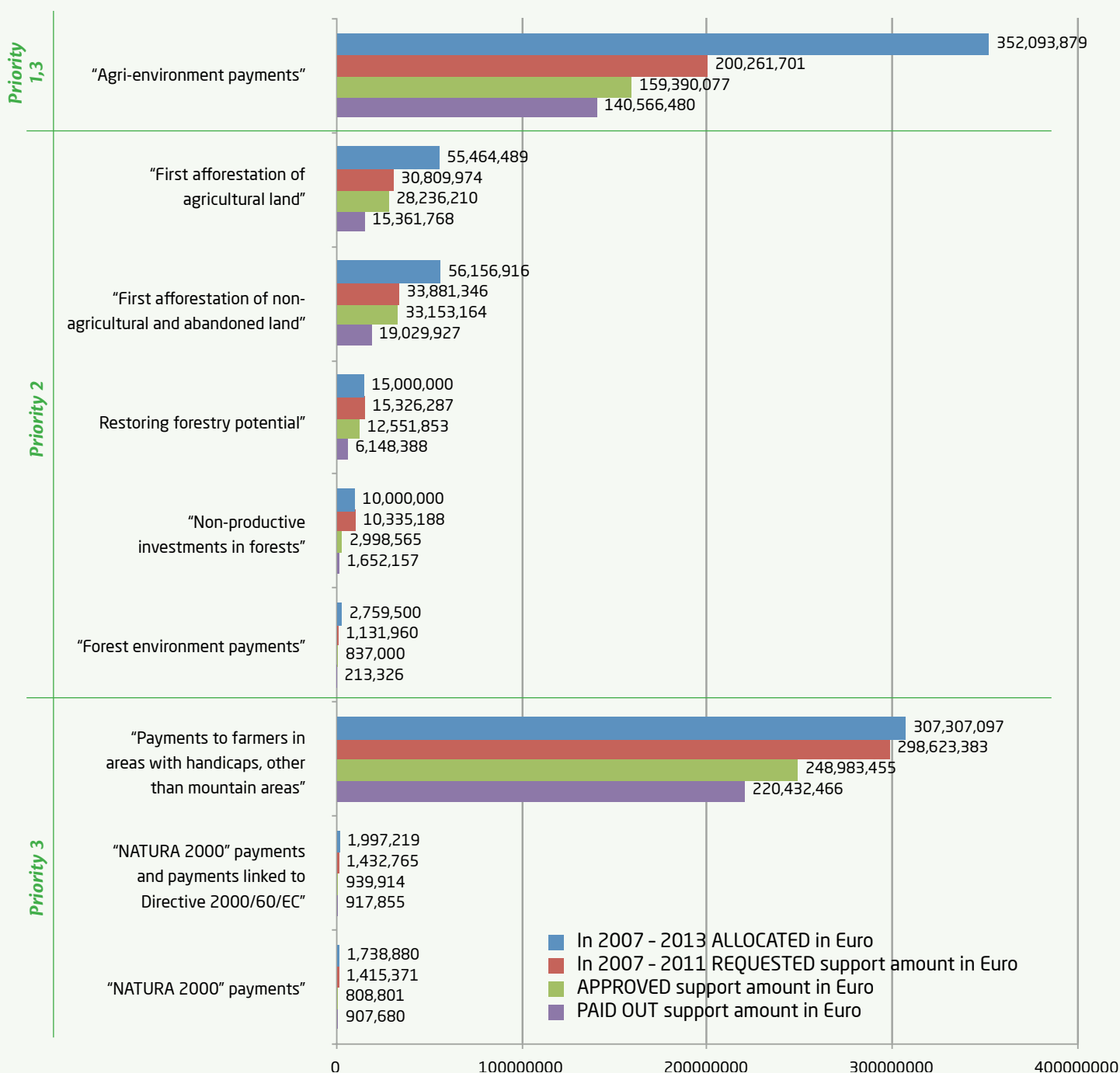
key habitats"; "Payments for non-clear forest harvesting instead of possible clear cutting".

**2.7. "Natura 2000" payments linked to Directive 2000/60/EC":**

**2.8. "Natura 2000" payments (support for Natura 2000 areas in forests)":**

**2.9. "Payments to farmers in Areas with Handicaps, other than Mountain Areas (less favoured areas for farming)":**

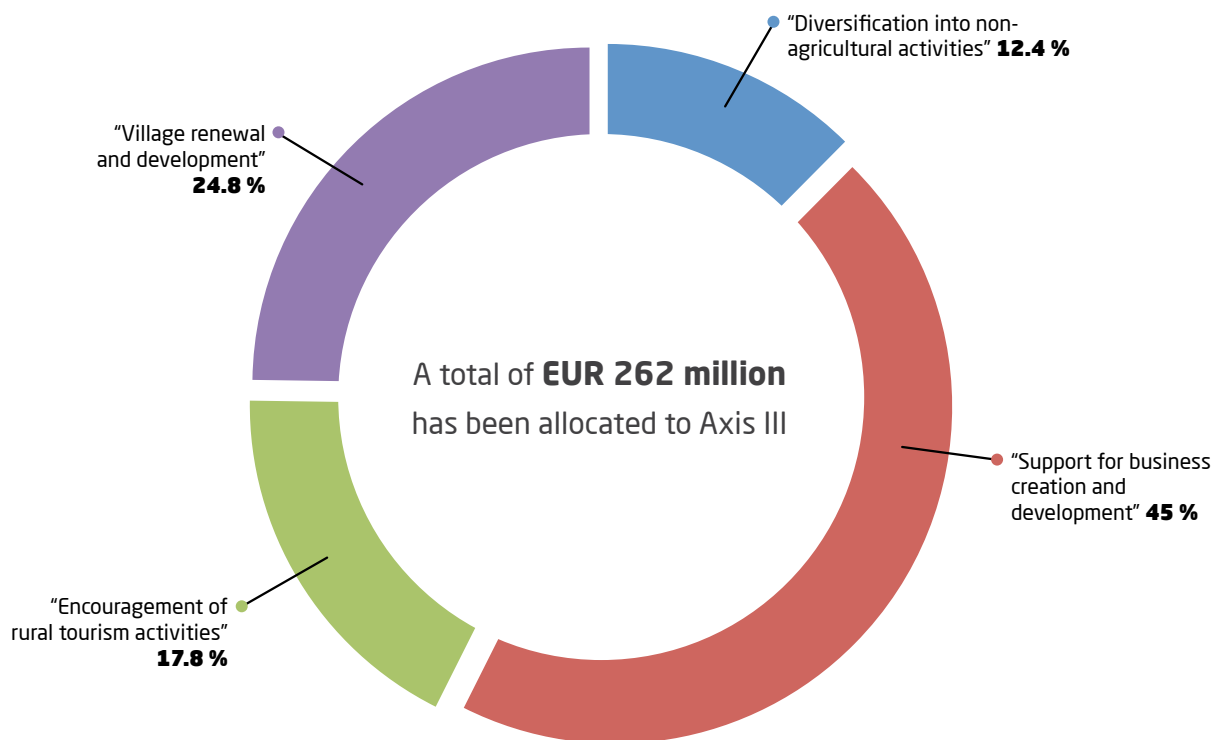
**Implementation of the Programme measures of Axis II until December 1, 2011**





## Axis III "The quality of life in rural areas and diversification of the rural economy"

**Objective:** to improve the quality of life and increase the employment of rural population in rural areas.



### Priorities

#### 3.1. Creation of alternative jobs and income sources:

"Diversification into non-agricultural activities";  
 "Support for business creation and development";  
 "Encouragement of rural tourism activities".

#### 3.2. Improvement of social and physical infrastructure, protection and enhancement of rural heritage:

"Village renewal and development".



EUR 46.7 million has been allocated for the Programme measure Encouragement of rural tourism activities in 2007 – 2013

## Implementation measures

### 3.1. "Diversification into non-agricultural activities"

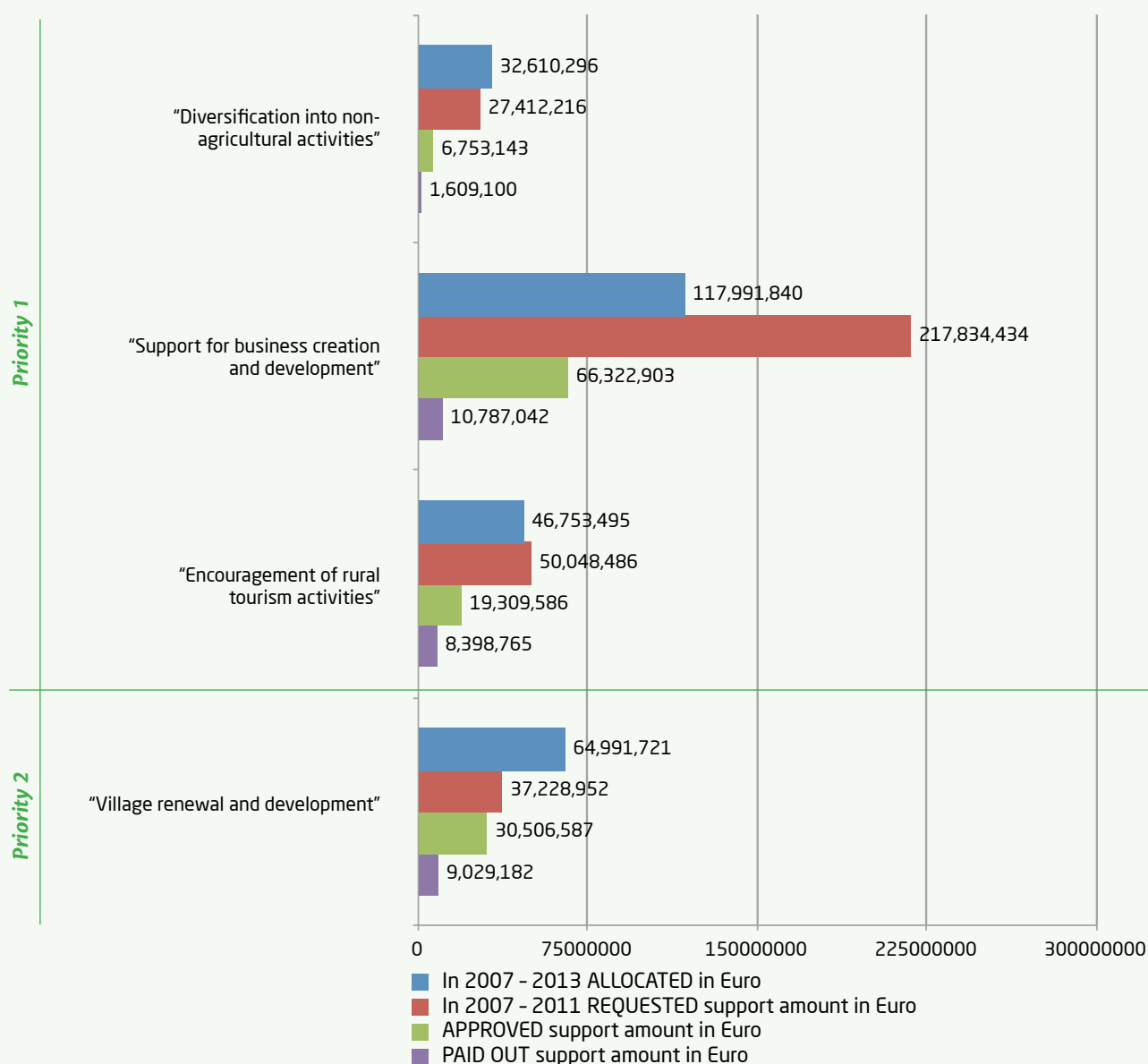
### 3.2. "Support for business creation and development"

Supported areas of action: "Non-agricultural activities, including services and products, except for bioethanol and other products attributed to biofuel, food and feedstock, falling under Annex 1 of the Treaty on the Functioning of the European Union, small volume production"; "Fostering of traditional crafts and development of traditional craft centres (profit-generating projects)".

3.3. "Encouragement of rural tourism activities". Supported areas of action: "Encouragement of rural tourism, including the development of crafts in rural tourism farmsteads"; "Establishment and development of rural tourist campsites (except forest areas)".

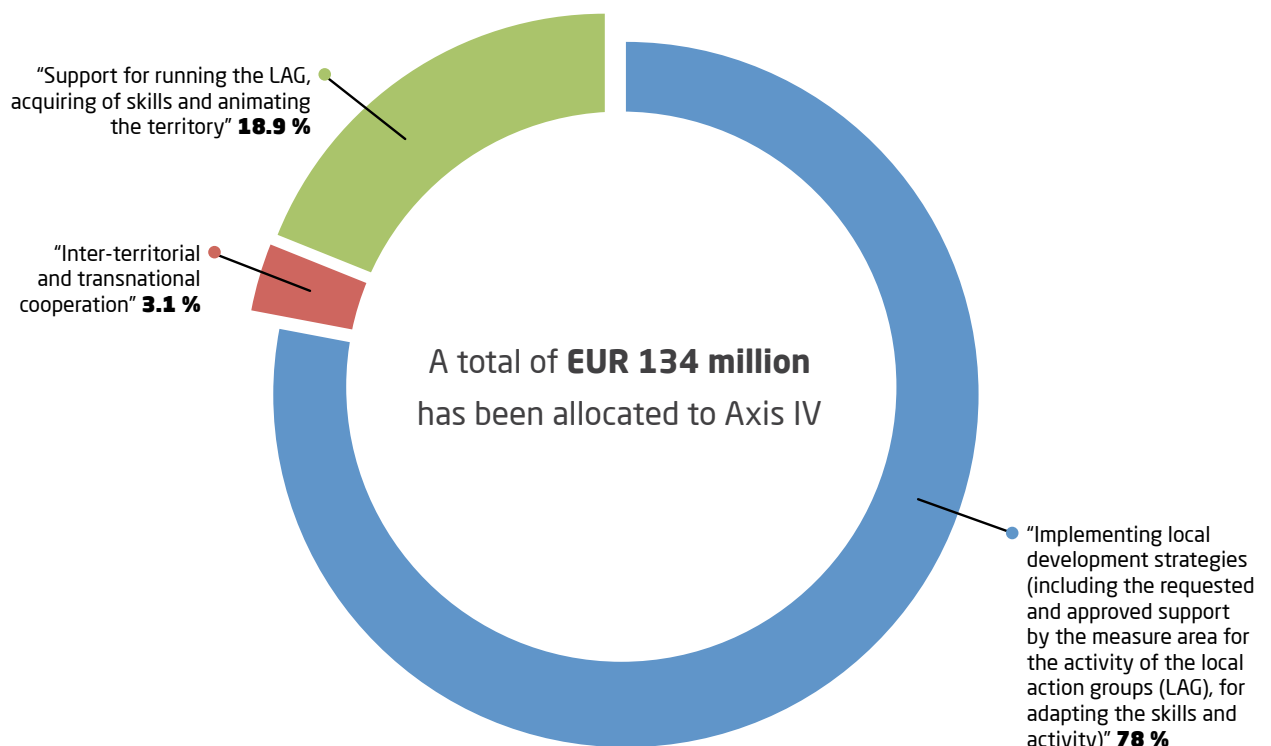
3.4. "Village renewal and development". Supported areas of action: "Village renewal and development"; "Establishment of traditional craft centres"; "Development of broadband network infrastructure in rural areas".

### Implementation of Programme measures of Axis III until December 1, 2011



## Axis IV "Leader" Method Implementation

**Objective:** to promote rural development through local initiatives and partnership.



### Prioritiy

**4.1. Promotion of local initiatives and cooperation, development of human capacities in order to develop and successfully implement local development strategies:**

"Implementing local development strategies (including the requested and approved support by the measure area for the activity of the local action groups (LAG), for adapting the skills and activity)"; "Inter-territorial and transnational cooperation"; "Support for running the LAG, acquiring of skills and animating the territory".



Support under the Programme measure Support for the LAG activity, acquisition and active adaptation of skills breathed new life into the Lithuanian rural communities

## Implementation Measures

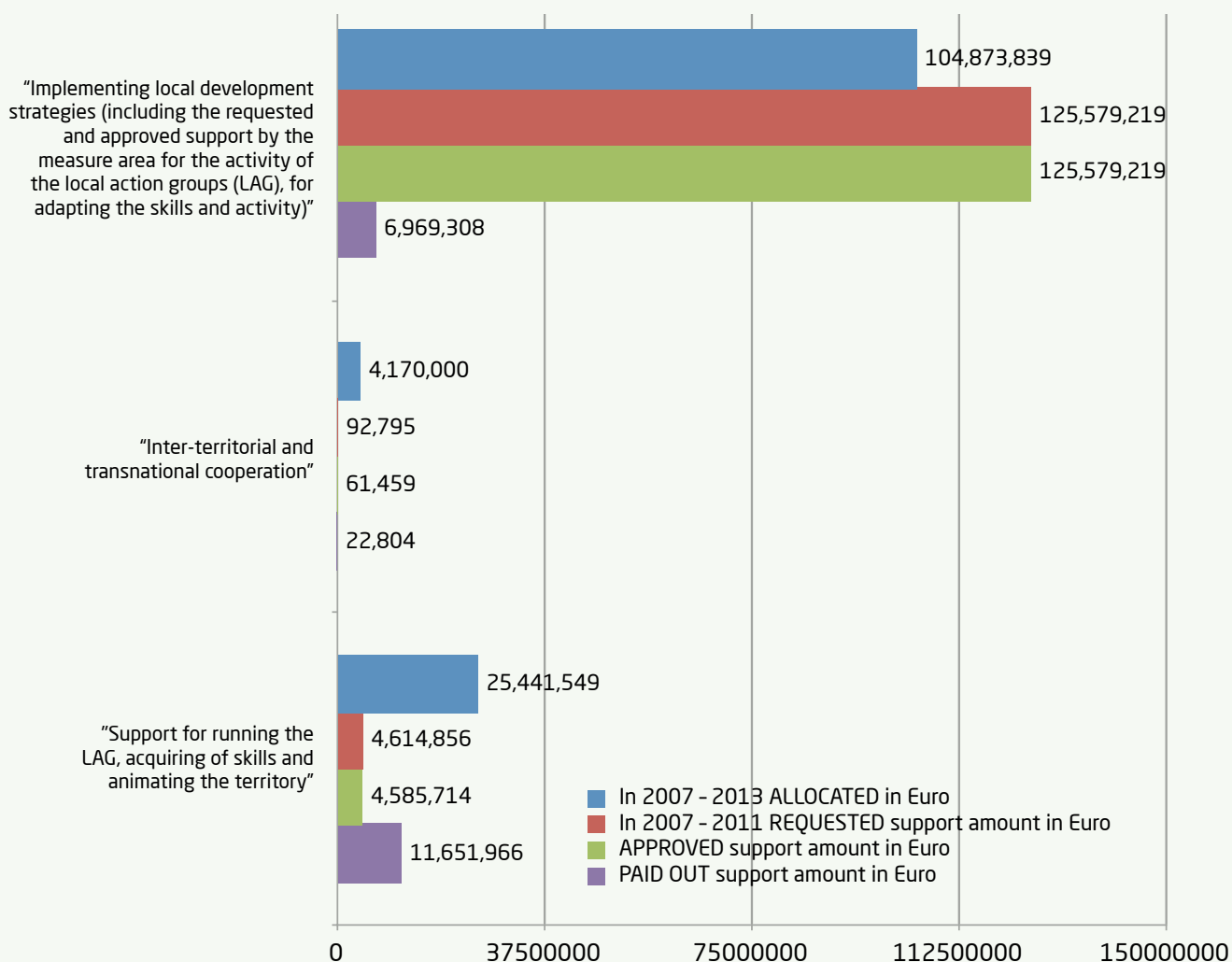
### 4.1. "Implementing local development strategies"

### 4.2. "Inter-territorial and transnational cooperation"

### 4.3. "Support for running the LAG, acquiring of skills and animating the territory": Supported areas of action: "Support for running the LAG"; "Technical support for rural studies, preparation and/or improvement of local

development strategies, training of persons involved in the preparation or improvement of local development strategies"; "Support for the training and advisory services of persons involved in the implementation of local development strategies"; "Support for the animation of the potential project executors in the LAG's territory".

### Implementation of Programme measures of Axis IV until December 1, 2011



## "Technical Support"

**Objective** is to ensure the efficient implementation of the Programme:

- to ensure the proper preparation, management, supervision, control, and assessment;
- to promote actions for the Programme publicity and public information about the EU support;
- through the Lithuanian rural network to promote cooperation between rural development participants, good practice and information exchange and dissemination.

# Lithuanian Rural Network



Lithuanian Rural Network was set up in December 2009 and is a new organizational structure joining institutions and organizations that participate in the Lithuanian Rural Development Programme (RDP) for 2007 – 2013.

Lithuanian Rural Network is an open structure. Rural communities, relating to the RAP implementation and/or contributing otherwise to the development of agriculture, forestry, food sector and rural development, the local action groups, non-governmental organizations, scientific institutions, organizations representing the business sector, municipal and state institutions and agencies take part in the network actions.

The number of the Network members increases with each year. In 2011, approx. 300 new members joined it, and the majority of them belong to rural communities. At the end of 2011, the Network already numbered 666 institutions and organizations, participating in rural development, agricultural, food sector and forestry processes. The Network activities have become more intensive not only due to the doubled number of its members, but also to the type of activity organization as such. Its members in their mutual communication and collaboration willingly make use of all opportuni-

ties of information technologies. Newsletters are subscribed, discussions in forums are held. A catalogue was made for search of interregional and international cooperation partners. In the official Network website, the good practice database is available.

The activities of the Network are supported according to the seven axes of the Lithuanian Rural Network Action Programme:

- identification of agricultural, food sector and rural development experience and changes, collection, systematization, analysis, generalization and submission of proposals;
- dissemination of experience in the field of agriculture, food section and rural development and other related information;
- development of training programmes for the local action groups, technical and methodical assistance in implementing the “Leader” method;
- technical support for regional and transnational cooperation of the rural development participants;
- representation of rural development participants in the EU organizations;
- implementation of the projects initiated by the Ministry of Agriculture of the Republic of Lithuania and related to agriculture, food sector and rural development;
- Network management.

In 2009 – 2013, EUR 6.95 mln was allocated for the Network financing.

## Implementation of Action Plan for 2011

No.	Funds	Total, EUR	Network committee I	Network committee II	Network committee III	Network committee IV	Network committee V	Network committee VI
1.	Funds, allocated for Action Programme Axes I-IV:	2 172 150	184 488	472 081	170 007	130 619	83 990	1 130 966
			292 applications submitted.					
2.	Funds, allocated for Action Programme Axis V:	169 428	11 applications for support submitted. Applicants: Chamber of Agriculture of the Republic of Lithuania, Lithuanian Rural Tourism Association, Lithuanian Farmers' Union, etc.					
3.	Funds, allocated for Action Programme Axis VI:	179 564	20 applications for support submitted. Applicants: Lithuanian University of Agriculture, PE “Tatula Programme”, Lithuanian Farmers' Union, etc.					
4.	Funds, allocated for Action Programme Axis VII “Network management”	289 620	27 applications for support submitted. Applicants: Kaunas regional LAGs, “Kruopiai” community, “Ateinam” Youth Club, etc.					
5.	Total:	2 810 762						

## The Network Board

Formed of the Network members, it deals with rural development issues and other issues relating to agriculture, food sector and forestry; it is also responsible for the Network activity coordination, activity animation, and formation of the annual action plans. The Network Board members shall represent the Network interests on the principle of rotation. They are delegated to the Network Board by the committees (each Network committee shall delegate 3 members).

### Network committees:

- Committee on rural policy issues (52 members);
- Committee for rural business promotion (93 members);

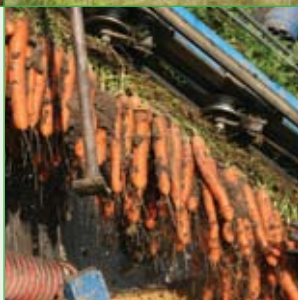
- Rural youth committee (59 members);
- Landscape and rural area planning committee (46 members);
- Committee for innovations and rural research (28 members);
- "Leader" and community promotion committee (388 members).

## Secretariat

To ensure the Network management, its efficient functioning and activity coordination as well as mutual cooperation of the links in this structure and their cooperation, the permanent Network secretariat was established.

### Activity priorities of the Network committees in 2012

<b>Committee on rural policy issues</b>	<ol style="list-style-type: none"> <li>1. Challenges of the general agricultural policy</li> <li>2. The present and future of Lithuanian agricultural policy in the context of foreign countries</li> <li>3. Popularization of Lithuanian products and consumer education</li> <li>4. Improvement of the quality of life in rural areas</li> <li>5. Activation of organizations representing interests of rural residents</li> </ol>
<b>Committee for rural business promotion</b>	<ol style="list-style-type: none"> <li>1. Promotion of rural entrepreneurship and competitiveness and competence improvement</li> <li>2. Promotion of rural cooperation, partnership and co-operatives</li> <li>3. Application of innovations in order to increase rural business efficiency</li> </ol>
<b>Rural youth committee</b>	<ol style="list-style-type: none"> <li>1. Promoting entrepreneurship for rural youth</li> <li>2. Organizing rural youth leisure time and employment</li> <li>3. Facilitating dialogue between generations in rural areas</li> <li>4. Promoting rural youth volunteering</li> <li>5. Promoting rural youth initiatives</li> <li>6. Fostering public spirit of rural youth</li> </ol>
<b>Landscape and rural area planning committee</b>	<ol style="list-style-type: none"> <li>1. Promotion of partnership</li> <li>2. Application of good and historical experience for village preservation and revival</li> <li>3. Enhancement of a traditional farm by preserving biodiversity</li> <li>4. Preserving forestry potential and harmonious development</li> <li>5. Landscape formation and management seeking a positive impact on climate change</li> </ol>
<b>Committee for innovations and rural research</b>	<ol style="list-style-type: none"> <li>1. Biotechnological innovations in rural areas</li> <li>2. Healthy environment and lifestyle in rural areas</li> <li>3. Development and implementation of social innovations in solving rural problems</li> <li>4. Application of information technologies in rural areas</li> <li>5. Application of technological innovation in rural areas</li> </ol>
<b>"Leader" and community promotion committee</b>	<ol style="list-style-type: none"> <li>1. Promotion of a sense of community and volunteering</li> <li>2. Partnership strengthening among rural development participants</li> <li>3. Promotion of community services development in rural areas</li> <li>4. Promotion of youth initiatives in rural areas</li> </ol>



Published by UAB "Gimtines šaltinis", Vilnius  
E-mail: [direktorius@gimtinessaltinis.lt](mailto:direktorius@gimtinessaltinis.lt)  
Internet website: [www.gimtinessaltinis.lt](http://www.gimtinessaltinis.lt)

Printed by UAB "Spaudos praktika"  
Chemijos Str. 29, LT-51333 Kaunas  
Circulation 2500 copies



**More extensive information relating to Lithuanian  
Rural Development Programme for 2007 - 2013 is available:**

Ministry of Agriculture of the Republic of Lithuania

[www.zum.lt](http://www.zum.lt)

Information portal Support for Village

[www.paramakaimui.lt](http://www.paramakaimui.lt)

National Paying Agency  
under the Ministry of Agriculture

[www.nma.lt](http://www.nma.lt)

Lithuanian Rural Network

[www.kaimotinklas.lt](http://www.kaimotinklas.lt)